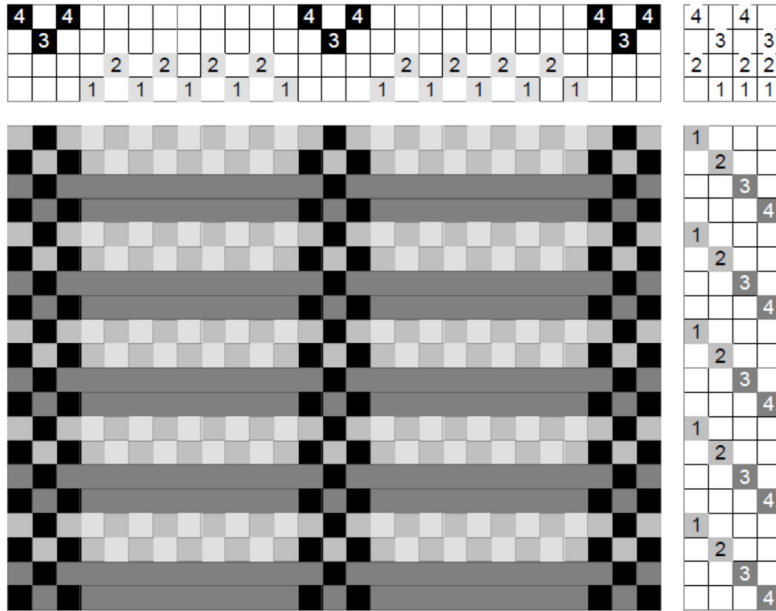


Bedford Cord

I learned about Bedford cord from Dini Moes. As the name implies, the fabric has ribs, parallel



to the warp, in contrast to piqué where the ribs are parallel to the weft. On four shafts, it is woven on a huck threading with a number of possible treadlings. In the drawdown on the left, the ribs are threaded on shafts 1 and 2 and the furrows on shafts 3 & 4. The plain weave of the furrows anchors the fabric

throughout. The plain weave that forms the ridges pushes the long floats to the back. To make the ribs more prominent, the fabric can be stuffed underneath the floats in the back.

The front of the fabric is shown on the left. The same yarn was used for warp and weft; for the

furrows, the same color was used on shafts 3 and 4 and for treadles 3 and 4. A different color was used for the ridges threaded on shafts 1 and 2 and for treadles 1 and 2. Below is the back of the fabric.

